

Title; COMPANY POLICY - SAFEGUARDING	Version; 1
Issue Date; April 2024	Review Date; April 2025 or earlier if required
Author; GOVERNANCE	No of Pages; 3



Whiteknights Indoor Bowls Club Ltd

(Registered Office)

21-23 Beech Lane, Earley, Reading, RG6 5PT

Telephone: 0118 986 0759

clubmanager@whiteknightsibc.co.uk

COMPANY POLICY; SAFEGUARDING

(Further information available at www.wokingham.gov.uk/community-and-safety)

Safeguarding at Whiteknights Indoor Bowls Club (the Company) means protecting peoples' rights, young or old, to live in a safe, free from an abuse and neglect society whether at work or play.

This policy aims to prevent harm and reduce the risk of abuse or neglect to both young persons and adults with the care and support required. As well as coaching, 'Safeguarding' must be inclusive in all Company Policies and Procedures.

The Care Act of 2016 places a general duty on local authorities to promote the wellbeing of individuals when carrying out care and support functions.

The definition of wellbeing includes:

- Personal dignity, including treating both young persons and adults with respect.
- Physical, mental health and emotional wellbeing.
- Protection from abuse and neglect.
- Control by the individual over day-to-day life.
- Participation in work, education, training or recreation.
- Social and economic wellbeing.
- Domestic, family and personal relationships.
- Suitability of living accommodation.
- Individual's contribution to society.

Additional advice and support can be obtained from the club's Safeguarding Officer or Wokingham Borough Council (WBC). Go to www.wokingham.gov.uk/community-and-safety

They may also be able to arrange suitable training courses.

Whilst in the Club, vulnerable adults must be accompanied by a responsible adult (Carer) in order to make any special provisions.

Generic provision

Toilet and changing facilities

Assistance on green (not necessarily a member).

Dietary requirements.

Note – because of the age of our building, we are not legally bound to provide disabled person facilities. However, under their Duty of Care, the Company thinks it is important to do so.

Title; COMPANY POLICY - SAFEGUARDING	Version; 1
Issue Date; April 2024	Review Date; April 2025 or earlier if required
Author; GOVERNANCE	No of Pages; 3

Please see separate Safeguarding flow chart displayed below and on the notice board.

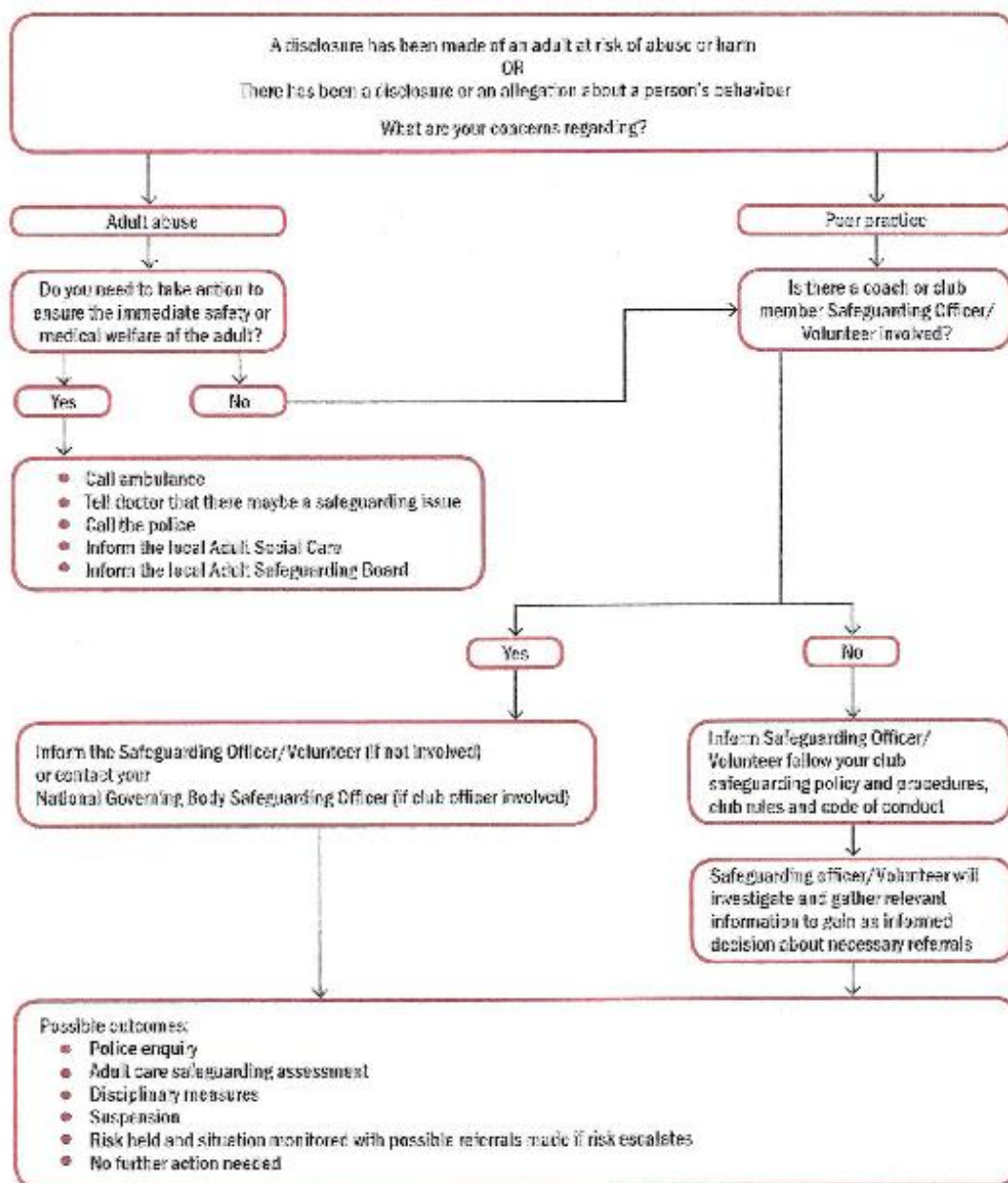


A WORLD-CLASS COACHING SYSTEM FOR A

SAFEGUARDING ADULTS FLOWCHART

Dealing with Concerns, Suspicions or Disclosure Guidance

You are advised to display this flowchart in your Bowls Club



Title; COMPANY POLICY - SAFEGUARDING	Version; 1
Issue Date; April 2024	Review Date; April 2025 or earlier if required
Author; GOVERNANCE	No of Pages; 3

Date of Change	Summary of change	Implemented by	New version no.